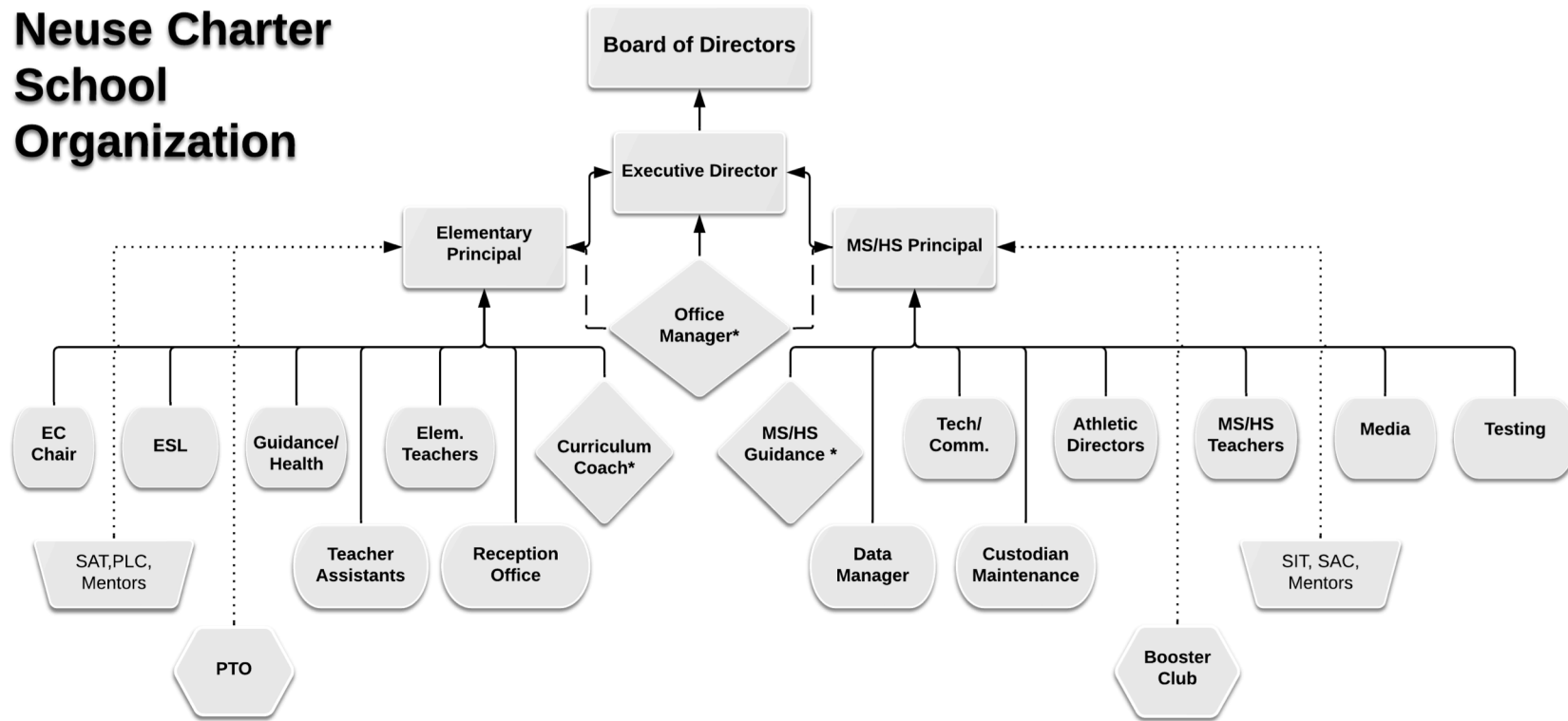


# Neuse Charter School Organization



- This is a 7-tiered hierarchical organization chart that shows staffs' roles, and the supervisors to whom staff report. The supervisors are the BOD, the Executive Director and the two Principals.
- The Office Manager reports to the Executive Director directly, but also checks in with the two Principals depending on the task. This relationship is indicated by the broken lines.
- \* The Curriculum Coach and the Office Manager are in charge of the Elementary school if the Elementary Principal is off campus. Hence, the diamond shaped boxes.
- \* The Guidance Counselor and the Office Manager are in charge of the Middle and High School if the MS/HS Principal is off campus. Hence the diamond-shaped boxes.
- The 4 broken lines indicate the Principal to whom groups (not staff positions) report. These groups are the SAT, PLC, Mentors, SIT, SAC, PTO and Booster.

